



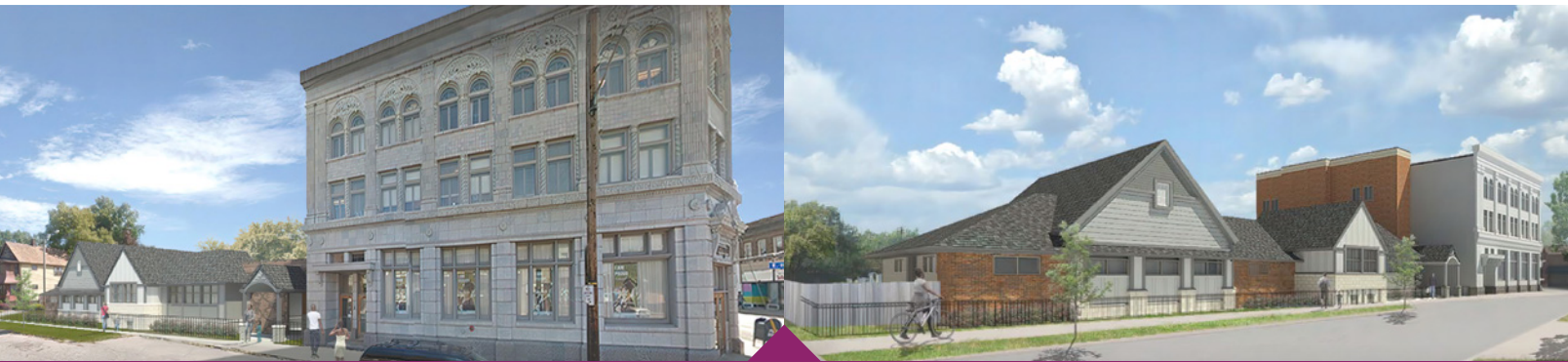
*Expanding Our Reach to Serve*  
**Every Child and Family**



# Our PHuture Takes Shape

## There is a lot of activity happening on the Providence House East Campus this spring!

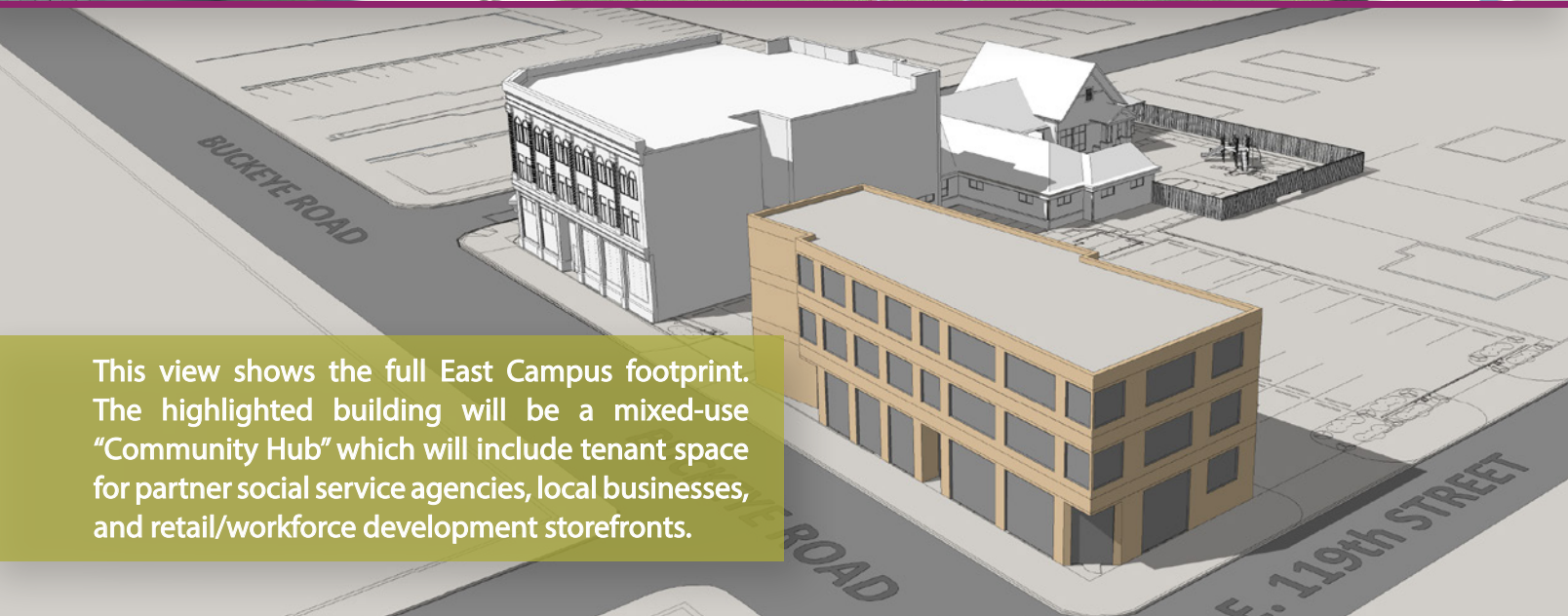
We will be breaking ground on our new 20-bed Crisis Nursery on East 118th and Buckeye Road as well as demolishing the building on our newly-acquired property next door to prepare the site for a three-story mixed-use "Community Hub." We expect construction on both projects to be complete by Summer 2023. Here is a look at our PHuture on the East Side:



This is what our East Campus will look like from East 118th Street. This view includes the existing building on Buckeye Road that will house our administrative offices, Children's Education and Activity Center, and Family Resiliency Center as well as the new Crisis Nursery wing, which will be called Hope's House.



Here is the other side of the future Crisis Nursery wing which will face an outdoor play area and children's garden. The brick wall on the left will become the canvas for a new community mural!



This view shows the full East Campus footprint. The highlighted building will be a mixed-use "Community Hub" which will include tenant space for partner social service agencies, local businesses, and retail/workforce development storefronts.

**FOUNDER:**

Sr. Hope Greener, CSJ

**PRESIDENT & CEO:**

Natalie A. Leek

**EXECUTIVE OFFICERS:**

Gregory D. Rush, Chair

Jane M. Cronin\*, Chair Emeritus

Timothy K. Flanagan, Vice Chair

Jeffrey Robinson, Treasurer

Paul T. Kostyack, Counsel, Secretary

**TRUSTEES:**

Meri Armour

Warren Blazy

Matt Coberly

Chris Conti

Jeff Douglas

John C. Evans

Carol A. Franklin

Dolores Garcia

Adam R. Jacobs

Anna Kanaris

Katherine Lehtinen

Joseph P. Lukac

Jenny Masterson

Ryan P. McKean

Yolanda McWilliams

Mike Mooney

Tori Nook

Eileen Schreiber-Radis

Angela Stojkov

Cristine Torek

John (Chaz) Weber

Karla R. Wludyga

**LEGACY COUNCIL MEMBERS:**

William J. Aamoth

Joseph W. Bauer

Edward J. Bell\*

Duane F. Bishop, Jr.\*

William M. Denihan\*

Terrance K. Donley

Evelyn Croft Faulkner

Sally Gries

Thomas M. Laird

Lolita McDavid, M.D.

Paul M. O'Connor\*

Rena Olshansky

Jeffrey K. Orloff\*

Susan M. Palmer

Dominic V. Perry\*

Robert J. Roe

Russell Trusso, M.D.

Gareth D. Vaughan\*

**HONORARY**

**LIFETIME MEMBERS:**

Suzanne Christ

William Christ, Sr.

Sr. Nancy Conway, CSJ

John Doherty\*

Robert Dorfmeier†

Stanley Kerka†

Sandy Kish Jordan

Greg Klein\*

Bettie Perry†

Charles E. Taylor, PhD\*

\* Past President † Deceased

## A Note from Natalie



We are so excited to announce that we are breaking ground on our new East Side Crisis Nursery! By expanding our services to the Buckeye-Shaker community, Providence

House will nearly double the number of children and families that we can support by offering services on the east and west sides of Cleveland. This much needed growth will help us reach hundreds of children each year who are being placed on our waiting list or left unserved due to the limited capacity on our west side campus.

But there is so much more to our expansion than just building a new crisis nursery. Our efforts to reach this exciting milestone for an east side campus included so many people and organizations.

From our east side champion - Council President/Ward 6 Councilman, Blaine Griffin, to the City of Cleveland Economic Development, Planning, and Zoning Departments, and Southeast Design Review, along with our community development partners Burton, Bell, Carr Development and Cleveland Neighborhood Progress, to our "boots on the ground teams" at HD+S Architects and The Albert M. Higley Co., and so many more.

And of course, our generous and visionary funders - both public and private - including the City of Cleveland, State of Ohio, Community Development Advisors, and PNC Bank, along with the many, many private foundations and

individuals who invested in our vision to reach more children and families experiencing crises.

Just like starting a new job, joining a new faith community or group - when moving into a new neighborhood, building relationships is essential to truly belonging to a community. We are deeply honored by the mentorship, partnership, friendship, and trust that we have received from the residents, merchants, faith communities, and fellow nonprofit partners in Buckeye-Shaker and the surrounding communities. Their warm welcome, sage counsel, and ongoing support for our services has been an amazing gift.

As you can see, while this is a Providence House project, this is also a massive community-wide effort. Everyone involved recognizes the vital importance of keeping our children safe and their families together. This is truly Cleveland's "village" rallying to help collectively raise its children safely and offer its families the support they need to thrive.

And we're not done! We are expanding even further and have purchased the property next door to our new Crisis Nursery for a future Community Hub to bring even more services to those who may need them. Stay tuned for more information about our east side campus expansion and ways that you can connect with us to support our community engagement and growth!

And please, always - and in all ways - continue to support our work with children and families today... and into the future.

**This is truly Cleveland's  
"village" rallying to help  
collectively raise its  
children safely and offer  
its families the support  
they need to thrive.**

## Join the Every Child Club!

By becoming a member of the Every Child Club, you will be sponsoring children in the Providence House Crisis Nursery on a continuing basis. The every child club is a flexible, monthly giving program with no set gift amount.

Contact Donor Engagement Manager, Angie, at [angelica@provhouse.org](mailto:angelica@provhouse.org) to learn more or to join today!





# Celebrating 20 Years of Leadership

We recently celebrated Natalie Leek's 20th anniversary as CEO of Providence House! Natalie's passionate commitment to children and families has made her an inspirational leader. We are grateful for all she has helped Providence House accomplish in the last two decades and are excited to have her at the helm as we focus on our PHuture!



## April is Child Abuse Awareness Month

Join Providence House in recognizing Child Abuse Awareness Month by participating in **Ohio's Wear Blue Day, Wednesday April 13**

The information below demonstrates the critical need to advocate for our children.

### 1-2-3-45 strikes against Cleveland's Children

#1

in the U.S. in child poverty - 52% of children in Cleveland live in poverty

#2

in the U.S. for infant mortality

#3

in the U.S. for working poor parents

#45

in the U.S. is Ohio's ranking in child welfare and abuse prevention investment



### Children who experience abuse and neglect are at a heightened risk for negative health outcomes

- ▶ 80% of 21 year olds abused as children meet the criteria for at least one psychological disorder
- ▶ Children who suffer maltreatment are 36% more likely to be obese during adulthood
- ▶ 56% more likely to have cancer or chronic heart conditions
- ▶ 80% more likely to die 20 years sooner than nurtured peers

# 41st Annual Luncheon

## CELEBRATING A GROUNDBREAKING YEAR

Wednesday, April 20 at noon

Renaissance Cleveland Hotel

Visit [provhouse.org/luncheon](http://provhouse.org/luncheon) for details and to RSVP



### PROGRAM SPOTLIGHT

## PHoundations for Success

The children who stay with us at Providence House are at a crucial stage of educational and developmental growth that lays the foundation for future learning, creative thinking, and problem-solving abilities.

More than half of families in poverty lack age-appropriate books in their homes. And as nearly all of the children served by Providence House live at or below the poverty line, for many of them, this critical period has been compromised by developmental delays, lack of school readiness skills, learning disabilities, and other educational barriers linked to poverty. Since early childhood success is vital to lifelong development, children in crisis who do not receive appropriate intervention are 13 times less likely to graduate from high school.

That's why we created the PHoundations for Success Program - to enhance early learning skills and reinforce developmental milestones. Our licensed social workers and childcare staff plan daily lessons, activities, and community field trips to improve each child's intellectual growth, and provide them with positive exposure to their community.

Through PHoundations for Success, Providence House helps put children on a path to achieve their highest potential throughout their lives.

At Providence House, we're focused on the development of the whole child – mind, body, heart, and spirit.





Non-Profit Org.  
U.S. Postage  
**PAID**  
Cleveland, OH  
Permit No. 1922

2050 West 32nd Street  
Cleveland, Ohio 44113

p. 216.651.5982 • [provhouse.org](http://provhouse.org)

Follow us on Social Media  
@provhousecle



### Are our records correct?

If you're receiving extra copies of  
the newsletter or notice a misspelling  
or error with our database,  
please let us know!

Email all updates to Angie Lastovka  
at [angelica@provhouse.org](mailto:angelica@provhouse.org)

## Looking Ahead

Visit [provhouse.org/events](http://provhouse.org/events) for more information!

pARTy with PHriends  
*September 30*

Deck the House  
*December 6*

Thank you to our annual Corporate Partners:



Proud to be a partner of:

